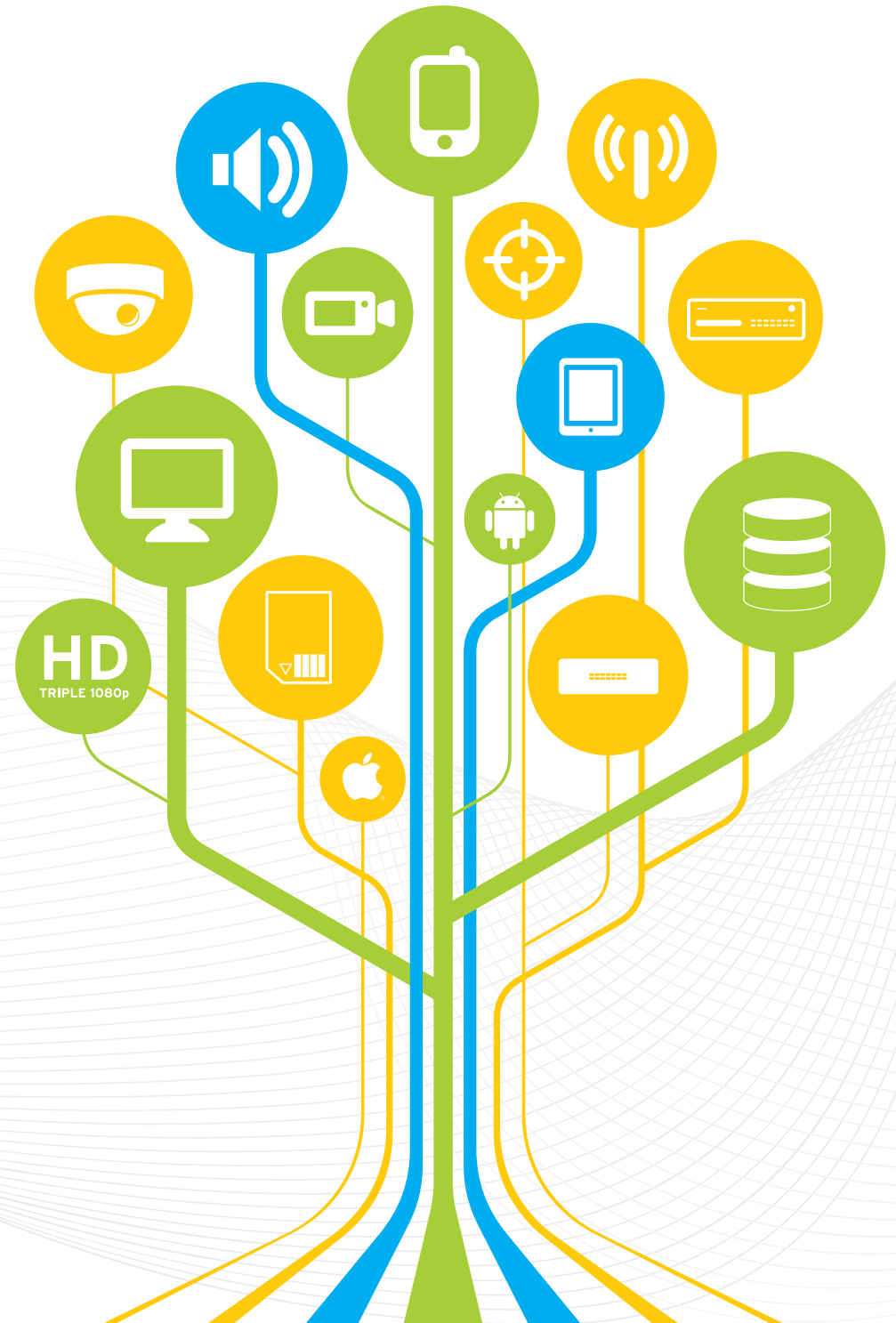




Flexibility by Design™



IP SOLUTIONS

Introduction

As the largest CCTV supplier in the UK, Vista is dedicated to delivering the best of breed IP video products to market. Our dedicated team of engineers is continually working with the latest technologies to ensure we are consistently delivering great products.

Within Vista we not only pride ourselves on the technical capabilities of our products, but we also firmly believe in offering the best possible customer experience. To this end, we strive to make Vista products as simple to use as possible whilst continuing to deliver exceptional performance.

CAMERAS

Our comprehensive range of cameras provides broadcast quality HD video and includes technologies such as Event Boost™ and triple streaming. Cameras are available in a number of designs to meet most project requirements.

E Series - Provides a careful balance between price and performance.

F Series - Offers superior features and motorised or PTZ lens options.

W Series - Unique range of Wireless cameras utilising industry standard WiFi.

NETWORK VIDEO RECORDERS

A simple range of recording solutions are available, offering either standalone operability or rackmount recorders designed for server room environments.

QNVR - Standalone DVR replacement with easy to use front panel controls.

VK2 Recorder - Server room style recorders offering real-time HD recording and rapid system expansion.

VK2 WiFi Recorder - Designed to work with Vista W series cameras.

COMPUTER HARDWARE

Vista provides a range of computer hardware designed and optimised for use with IP video products, including client workstations and server solutions.

SOFTWARE

A range of free of charge software options and mobile apps are available for cameras and recorders, allowing access to live and recorded video via PC or mobile device.





VK2 E-Series

OVERVIEW

The E-Series is our most popular IP product range, providing a careful balance between price and performance. All cameras offer 1080p HD broadcast quality video and are available in a wide range of form factors making them suitable for most internal or external project requirements.

SPECIFICATION

- Full HD 1080p resolution
- Triple HD streaming
- Vista Event Boost™ technology
- Multiple form factors
- Fixed and Varifocal lens options
- IR illumination*
- Power over Ethernet
- ONVIF Profile-S Compliant
- Includes free recording software

*Model Specific

E-Series



Camera Type	VK2-1080VRDIR35V16e	VK2-1080VRDIR37e	VK2-1080VRD3V9	VK2-1080BIR35V16e	VK2-1080BIR37e	VK2-1080VDIR37E	VK2-1080VFD	VK2-1080BXDN	VK2-ENCODER
Product Code	0696630	0697120	0474620	0696250	0690130	0690140	0473980 (White) 0473990 (Black)	0498280	0471760
Sensor Type	1/2.8" Progressive Scan Sony CMOS	1/2.8" Progressive Scan Sony CMOS	1/2.8" Progressive Scan Sony CMOS	1/2.8" Progressive Scan Sony CMOS	1/2.8" Progressive Scan Sony CMOS	1/2.8" Progressive Scan Sony CMOS	1/2.7" Progressive Scan Sony CMOS	1/2.7" Progressive Scan Sony CMOS	N/A
Lens Type	3.5-16mm megapixel F1.2	3.7mm megapixel F1.8	3-9mm megapixel lens	3.5-16mm megapixel F1.2	3.7mm megapixel F1.8	3.7mm megapixel F1.8	3-9mm, megapixel F1.2	Sold Separately	N/A
True Day / Night	Yes	Yes	Yes	Yes	Yes	Yes	Yes	Yes	N/A
IR Illumination	36 LEDs up to 20m range	24 LEDs up to 15m range	No	36 LEDs up to 20m range	24 LEDs up to 15m range	24 LEDs up to 15m range	No	No	N/A
Min Illumination	Colour 1.0Lux, B/W 0.0Lux IR on	Colour 0.2Lux, B/W 0.0Lux IR on	Colour 0.2Lux, B/W 0.1Lux	Colour 1.0Lux, B/W 0.0Lux IR on	Colour 0.2Lux, B/W 0.0Lux IR on	Colour 0.2Lux, B/W 0.0Lux IR on	Colour 0.9Lux, B/W 0.2Lux	Colour 2.5Lux, B/W 0.2Lux	N/A
Max Resolution (HxV)	1920x1080	1920x1080	1920x1080	1920x1080	1920x1080	1920x1080	1920x1080	1920x1080	704x576
Max Frame Rate	30ips	30ips	30ips	30ips	30ips	30ips	30ips	25ips	25ips
Video Compression	H.264(BP/MP/HP), MPEG4(SP), MJPEG	H.264(BP/MP/HP), MPEG4(SP), MJPEG	H.264(BP/MP/HP), MPEG4(SP), MJPEG	H.264(BP/MP/HP), MPEG4(SP), MJPEG	H.264(BP/MP/HP), MPEG4(SP), MJPEG	H.264(BP/MP/HP), MPEG4(SP), MJPEG	H.264(BP/MP/HP), MPEG4(SP), MJPEG	H.264(BP/MP/HP), MPEG4(SP), MJPEG	H.264(BP/MP/HP), MPEG4(SP), MJPEG
No of Streams	3	3	3	3	3	3	3	3	2
Boost Function	Yes	Yes	Yes	Yes	Yes	Yes	Yes	Yes	No
BLC	Yes	Yes	Yes	Yes	Yes	Yes	Yes	Yes	N/A
Privacy Mask	Yes	Yes	Yes	Yes	Yes	Yes	Yes	Yes	Yes
Motion Detection	Yes	Yes	Yes	Yes	Yes	Yes	Yes	Yes	Yes
Network Port	10/100Mbps	10/100Mbps	10/100Mbps	10/100Mbps	10/100Mbps	10/100Mbps	10/100Mbps	10/100Mbps	10/100Mbps
PoE	IEEE 802.3af Class 0	IEEE 802.3af Class 0	IEEE 802.3af Class 0	IEEE 802.3af Class 0	IEEE 802.3af Class 0	IEEE 802.3af Class 0	IEEE 802.3af Class 0	IEEE 802.3af Class 0	N/A
Local Power	12VDC, 6W	12VDC, 6W	12VDC, 5W	12VDC, 6W	12VDC, 6W	12VDC, 6W	12VDC, 6W	12VDC, 6W	12VDC/24VAC, 5W
Software Triggers	4	4	4	4	4	4	4	4	4
Hard Wired Alarms In and Out	No	No	2 in 1 out	No	No	No	1 in 1 out	2 in 1 out	2 in 1 out
Audio In and Out	No	No	Yes	No	No	No	No	Yes	Yes
On-Board Storage	Micro SD card up to 32GB Class 6 or above*	Micro SD card up to 32GB Class 6 or above*	Micro SD card up to 32GB Class 6 or above*	Micro SD card up to 32GB Class 6 or above*	Micro SD card up to 32GB Class 6 or above*	Micro SD card up to 32GB Class 6 or above*	Micro SD card up to 32GB Class 6 or above*	Micro SD card up to 32GB Class 6 or above*	No
IP Rating	IP66	IP66	IP66	IP65	IP67	Internal	Internal	Requires housing	Internal
Vandal Resistant	Yes (Built to IK10)	Yes	Yes (Built to IK10)	No	No	No	No	No	No
ONVIF Support	Profile-S	Profile-S	Profile-S	Profile-S	Profile-S	Profile-S	Profile-S	Profile-S	Profile-S

*Not included



VK2 F-Series

OVERVIEW

The F-Series offers a carefully selected range of cameras that feature remote lens setup or PTZ functionality. The intelligent lenses ensure optimum video quality at all times of day and night by automatically adjusting their focus on colour / mono switch over. Selected products in the range also include alarm inputs and bi-directional audio capabilities.

SPECIFICATION

- Smart Focus or PTZ lens
- Alarm input*
- Bi-directional audio*
- Full HD 1080p resolution
- Triple HD streaming
- Vista Event Boost™ technology
- Multiple form factors
- IR illumination*
- Power over Ethernet
- ONVIF Profile-S Compliant
- Includes free recording software

**Model Specific*

F-Series



Camera Type	VK2-1080XPTZ	VK2-1080XVRDPTZ	VK2-1080VRDIR3V9F	VK2-1080BIR3V9F	VK2-1080VFD3V9F/WCW	VK2-1080VFD3V9F/BCB
Product Code	0698610	0690110	0474600	0474560	0498680	0498690
Sensor Type	1/2.8" Progressive Scan Sony CMOS	1/2.8" Progressive Scan Sony CMOS	1/2.8" Progressive Scan Sony CMOS	1/2.8" Progressive Scan Sony CMOS	1/2.7" Progressive Scan Sony CMOS	1/2.7" Progressive Scan Sony CMOS
Lens Type	30x Optical 4.3-129mm, 16x Digital zoom	12x Optical 5.32-62.6mm, 16x Digital zoom	Remote setup Motorised 3-9mm, Megapixel IR corrected	Remote setup Motorised 3-9mm, Megapixel IR corrected	Remote setup Motorised 3-9mm, Megapixel IR corrected	Remote setup Motorised 3-9mm, Megapixel IR corrected
Remote Set Lens	N/A	N/A	Yes	Yes	Yes	Yes
True Day / Night	Yes	Yes	Yes	Yes	Yes	Yes
IR Illumination	No	No	24 LEDs up to 10m range	36 LEDs up to 15m range	No	No
Auto Focus On Day/Night Switch	Yes	Yes	Yes	Yes	Yes	Yes
Min Illumination	Colour 0.5Lux, B/W 0.1Lux	Colour 0.5Lux, B/W 0.1Lux	Colour 0.9Lux, B/W 0Lux IR on	Colour 0.9Lux, B/W 0Lux IR on	Colour 0.9Lux, B/W 0.2Lux	Colour 0.9Lux, B/W 0.2Lux
Max Resolution (HxV)	1920x1080	1920x1080	1920x1080	1920x1080	1920x1080	1920x1080
Max Frame Rate	60ips	60ips	30ips	30ips	30ips	30ips
Video Compression	H.264(BP/MP/HP), MPEG4(SP), MJPEG	H.264(BP/MP/HP), MPEG4(SP), MJPEG	H.264(BP/MP/HP), MPEG4(SP), MJPEG	H.264(BP/MP/HP), MPEG4(SP), MJPEG	H.264(BP/MP/HP), MPEG4(SP), MJPEG	H.264(BP/MP/HP), MPEG4(SP), MJPEG
No of Streams	3	3	3	3	3	3
Boost Function	Yes	Yes	Yes	Yes	Yes	Yes
BLC	Yes	Yes	Yes	Yes	Yes	Yes
Audio	Yes	Yes	Yes	No	No	No
Alarm Inputs	1 in 1 out	2 in 1 out	2 in 2 out	No	1 in	1 in
Privacy Mask	Yes	Yes	Yes	Yes	Yes	Yes
Motion Detection	Yes	Yes	Yes	Yes	Yes	Yes
Network Port	10/100Mbps	10/100Mbps	10/100Mbps	10/100Mbps	10/100Mbps	10/100Mbps
PoE	Camera module only - IEEE802.3af Class 4	IEEE802.3af Class 3	IEEE 802.3af Class2	IEEE 802.3af Class2	IEEE 802.3af Class2	IEEE 802.3af Class2
Local Power	12VDC/24VAC, 12W	12VDC/24VAC, 12W	12VDC/24VAC, 5.5W	12VDC, 4.3W	12VDC, 3.5W	12VDC, 3.5W
Software Triggers	4	4	4	4	4	4
IP Rating	IP66 (with external housing)	IP66	IP66	IP65	Internal	Internal
On-Board Storage	Micro SD card up to 32GB Class 6 or above*	Micro SD card up to 32GB Class 6 or above*	Micro SD card up to 32GB Class 6 or above*	Micro SD card up to 32GB Class 6 or above*	Micro SD card up to 32GB Class 6 or above*	Micro SD card up to 32GB Class 6 or above*
Vandal Resistant	Yes (IK10, with clear bubble external housing)	Yes (Built to IK10)	Yes (Built to IK10)	Yes (Built to IK10)	No	No
ONVIF Support	Profile-S	Profile-S	Profile-S	Profile-S	Profile-S	Profile-S

**Not included*



VK2 W-Series

OVERVIEW

The W-Series offers PoE and wireless connectivity in a variety of compact designs. All cameras offer HD quality video and are available in a number of form factors for both internal and external applications.

SPECIFICATION

- Wireless and cabled connectivity*
- Up to full HD 1080p resolution
- Triple HD streaming
- Vista Event Boost™ technology
- Multiple form factors
- Power over Ethernet*
- ONVIF Profile-S Compliant
- Compatible with Vista wireless NVR
- Pan / Tilt model available
- Includes free recording software

*Model Specific

W-Series



Camera Type	VK2-1080MD37PTW	VK2-1080MD37W	VK2-2MPCCW
Product Code	0680430	0657100	0474680
Wireless	Built-in IEEE 802.11b/g/n wireless LAN, WEP, WPA2, WPA-PSK, WPS (Software WPS setup) (B/G/M)	Built-in IEEE 802.11b/g/n wireless LAN, WEP, WPA2, WPA-PSK, WPS (Software WPS setup) (B/G/M)	Built-in IEEE 802.11b/g/n wireless LAN, WEP, WPA2, WPA-PSK, WPS (Software WPS setup) (B/G/M)
Sensor Type	1/2.8" Progressive Scan Sony CMOS	1/2.8" Progressive Scan Sony CMOS	1/4" Progressive scan Sony CMOS
Lens Type	3.7mm, F1.8	3.7mm, F1.8	2.6mm, F1.8
Day / Night	Software Day/Night	Software Day/Night	Colour
Min Illumination	0.2Lux	0.2Lux	0.6Lux
Max Resolution (HxV)	1920x1080	1920x1080	1600x1200
Max Frame Rate	30ips	30ips	12ips
Video Compression	H.264(BP/MP/HP), MPEG4(SP), MJPEG	H.264(BP/MP/HP), MPEG4(SP), MJPEG	H.264(BP/MP/HP), MPEG4(SP), MJPEG
No of Streams	3	3	3
Boost Function	Yes	Yes	Yes
Remote Pan / Tilt	Yes	N/A	N/A
BLC	Yes	Yes	No
Privacy Mask	Yes	Yes	Yes
Motion Detection	Yes	Yes	Yes
Network Port	10/100Mbps	10/100Mbps	10/100Mbps
PoE	IEEE 802.3af Class 0	IEEE 802.3af Class 0	No
Local Power	12VDC, 6W	12VDC, 6W	5VDC, 3W
Software Triggers	4	4	4
Hard Wired Alarms In and Out	1 in 1 out	1 in 1 out	No
Audio In and Out	No	No	No
On-Board Storage	Micro SD card up to 32GB Class 6 or above*	Micro SD card up to 32GB Class 6 or above*	Micro SD card up to 32GB Class 6 or above*
IP Rating	IP65	Internal only	Internal only
Vandal Resistant	IK09	No	No
ONVIF Support	Profile-S	Profile-S	Profile-S

*Not included

Network Video Recorders

OVERVIEW

Vista offer a range of NVRs, each one providing customers with flexibility and scalability. All NVRs can record HD 1080p video, offer alarm inputs and include free management software.

NVRs



NVR Type	QNVR	QNVR with PoE	VK2-REC16HD	VK2-REC04HDW
Product Code	0690520, 0690530, 0690540, 0690550	0703220, 0703230, 0703240, 0703250, 0703260	0656330, 0656340, 0656350, 0656360	0658370, 0658380, 0658390
No of Channels	16	4/8	16	4
Monitor Outputs	HDMI and VGA	HDMI and VGA	None	None
PoE	No	Yes	No	No
Front Panel Control	Yes	Yes	No	No
Remote Joystick Keyboard	Yes	Yes	Yes - via USB and Client	Yes - via USB and Client
Recording Frame Rates	1080p up to 160ips, 720p up to 320ips, D1 up to 640ips	1080p up to 160ips, 720p up to 320ips, D1 up to 640ips	Up to 400ips at all resolutions up to 1080p	Max 100ips @ 1920x1080 Ethernet, Max 100ips @ 704x576 Wireless
Video Compression	H.264, MPEG4, MJPEG	H.264, MPEG4, MJPEG	H.264, MPEG4, MJPEG	H.264, MPEG4, MJPEG
Max Internal Hard Drive Storage	Up to 16TB	Up to 8TB	Up to 12TB	Up to 3TB
Camera Compatibility	VK2 cameras and other ONVIF Profile-S static cameras	VK2 cameras and other ONVIF Profile-S static cameras	All VK2 cameras	All VK2 cameras
Archiving Options	DVD/USB or client	DVD/USB or client	VK2-Client	VK2-Client
Recording Throughput	64Mbps per network port	64Mbps per network port	64Mbps per network port	16Mbps
Network Inputs	3 (Cameras, PC and NAS)	3 (Cameras, PC and NAS)	2 (Cameras and PC)	1
Alarm Inputs	16	4	2	8
Alarm Outputs	4	1	2	8
Seamless Stream Switching	Yes	Yes	No	No
eSATA Output	Yes	No	Yes	No
NAS Output	Yes	No	No	No
Software Supplied	QNVR, QCMS and browser	QNVR, QCMS and browser	VK2-Client and browser	VK2-Client and browser
Mobile Apps	Q-Remote, iOS and Android	Q-Remote, iOS and Android	VK2-Remote, iOS and Android	VK2-Remote, iOS and Android
Power	100~240VAC, 50~60Hz, 100W	NVR-12VDC/3.5A, PoE 48VDC (12W per channel)	100 - 240VAC, 50/60 Hz 70W	12VDC 5A DC 60W
Dimensions (WxDxH)	450x370x90mm	352x252x71mm	570x245x560mm	190x60x255mm
Weight	5Kg	3Kg	8.9Kg	1.3Kg
WiFi Camera Connection	No	No	No	Integrated 2.4GHz 802.11 B/G/N with WPS support
Approvals	CE RoHS2: 2011/65/EU	CE RoHS2: 2011/65/EU	CE RoHS2: 2011/65/EU	CE RoHS2: 2011/65/EU

Hardware

CLIENT PC OVERVIEW

The Vista Client PC has been designed specifically for the video surveillance market. Its powerful performance and small size make this the perfect Video Management System (VMS) viewing client.

CLIENT / SERVER PC OVERVIEW

Vista's Client / Server PC has the performance and storage capacity to make it ideal for Video Management Systems.



SPECIFICATION

Processor: Intel i5 3.4GHz
Memory: 4GB
Disk Space: 120GB
Graphics: Dedicated 1GB Nvidia (Dual Monitor)
Power Requirements: 150W
Operating System: Windows 7 Pro 64bit

- Solid State OS Disk (Quick Boot)
- Tiny foot print
- Intel i5 processor
- Compatible with VK2-Client/QCMS
- Support for 3rd party VMS clients

Model No. VistaPC-i5-120-s
Product Code: 0657170

SPECIFICATION

Processor: Intel i7 3.4GHz
Memory: 8GB
Operating System Disk Space: 120GB
Recording Disk Space: up to 21TB
Graphics: Dedicated 1GB Nvidia (Dual Monitor)
Power Requirements: 250W
Operating System: Windows 7 Pro 64bit

- Solid State OS Disk (Quick Boot)
- Up to 21TB on-board storage
- Intel i7 processor
- Compatible with VK2-Client/QCMS
- Support for 3rd party VMS clients

Model No. VistaPC-i7SVR-xxTB
Product Code: 0680600, 0680610, 0680620, 0680630, 0680640

IP Monitor

OVERVIEW

Until now, IP systems have required a conventional monitor and decoder to be used, providing D1 resolution images. The new 24" and 32" IP networked monitors from Vista don't require a hardware decoder and can display high-definition, 1080p video from a single stream or four D1 streams from separate cameras in quad format. Extremely simple to set up, this provides higher resolution images over previous solutions of a decoder and analogue monitor. Because it's based on ONVIF, it decodes streams from 3rd party cameras - providing the user with the greatest flexibility possible.



SPECIFICATION

- 24" and 32" monitor options
- Connects direct to IP network
- Built-in 4 camera decoder
- Full screen HD display
- 4 camera full HD sequence
- 4 camera quad display - D1 resolution per camera
- Desk mount or VESA mount
- ONVIF compliant

Model No. VFS24HDIP / VFS32HDIP
Product Code: 0703480 (24"), 0704010 (32")

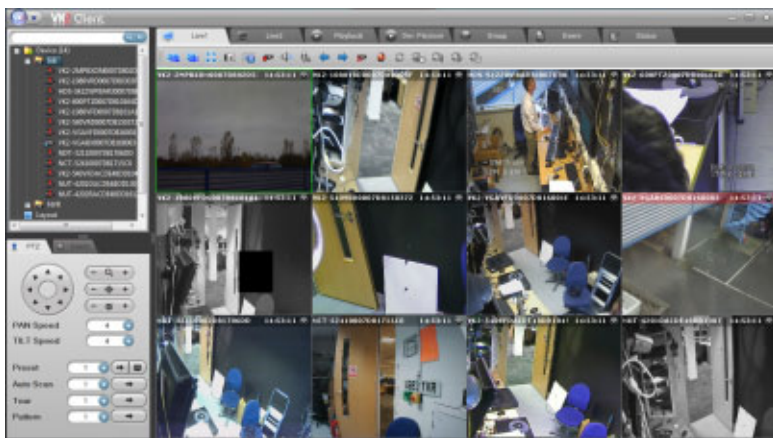
Software Packages

VK2-CLIENT OVERVIEW

VK2-Client boasts a number of features usually associated with high-end licensed Video Management Software (VMS), including viewing of up to 128 live video streams across 2 monitors, local recording of up to 32 video streams and interactive graphical maps.

Fully compatible with Vista VK2 cameras and the VK2 Recorders, VK2-Client provides both live and recorded video from the VK2 Recorders and/or SD card within the VK2 camera itself.

The software is supplied free of charge, requires no licenses and is supplied with all VK2 products.



SPECIFICATION

- View and record up to 32 cameras
- Access video recorded to SD card on Vista VK2 cameras
- PTZ control
- Graphical maps
- Alarm management
- Camera discovery

QCMS OVERVIEW

QCMS is a powerful VMS package supplied free of charge with every Vista Quantum NVR and analogue DVR. It allows the operator to connect to multiple units at the same time, providing the ability to display IP and analogue cameras on a single monitor.

The operator, depending on their access level, is allowed to view live images, review playback, download and archive video, control PTZ cameras and configure the settings on the NVRs and DVRs.

Up to 64 images can be displayed on a single screen.



SPECIFICATION

- Connect to multiple Quantum 960H, XTRA, PLUS, EVO and the Quantum NVR
- Display live images from multiple units
- Review playback from multiple units
- Download archived footage
- Control telemetry pan and tilt cameras
- Configure the settings of units remotely



Enter a new era of power, performance and freedom with Vista's new Video Management Software (VMS), qulu. Designed to offer the most efficient performance on the market today, this revolutionary software allows users to interact with video like never before.

KEY FEATURES/BENEFITS

Supports 3rd party cameras, including fisheye cameras

qulu provides choice and flexibility when it comes to choosing the right camera for your project, currently supporting around 300 camera makes and models from brands such as Axis, Arecont, Samsung, Vivotek and Vista VK2.

Our own fisheye 360° dewarping technology dewarps video from almost any fisheye camera, allowing the ability to generate multiple camera views from a single camera. This unique feature provides unprecedented levels of live and recorded interrogation.

Support for Windows, Linux and Apple Mac operating systems

Customers can use the operating system they're most comfortable with. Most competitors can't offer this level of flexibility and functionality.

Simple pricing structure

No base license, no client license, no annual support fees, no upgrade charges. We believe this is the simplest video system on the market to specify.

Interrogate live and recorded video

Select multiple regions of interest and view all scenes simultaneously. Easily track across multiple cameras and zoom in to further investigate a chosen scene.





 **FISHEYE CAMERAS**



 **INTERROGATE A SCENE**



 **POWERFUL SEARCH FUNCTION**

Quick, simple search function

Search intelligently by highlighting an area on screen - qulu will display any motion events in that area within seconds.

Small, easily downloadable software packages

Download and install qulu before most other VMS packages have even downloaded. Ideal for areas with limited internet access as often found on-site.

Self monitoring for system optimisation

qulu constantly monitors all aspects of the system, including CPU, memory, network and hard drives. The software will automatically alert users to any weaknesses and intelligently compensate to reduce load on the system.

Reduced cost of ownership

Save money on hardware due to the requirement for fewer system resources compared to other VMS packages on the market.

30 day free download

Vista is so confident that you'll be blown away by qulu, we're providing a 30 day free trial of the software. Download your copy from www.vista-cctv.com/product/qulu.

Request a demo

To truly understand the power of the software, why not benefit from one of our experts for a demonstration. These can either take place in our fully stocked demo rooms, or at a location convenient to you.

Online video

It doesn't take long to understand the power and flexibility that qulu offers. Our brief, **online video** will give you a great introduction to the software and why it's unique on the market.

ORDERING INFORMATION

0480800	Single Camera License
0480810	Camera License - 10 Pack
0480820	Camera License - 20 Pack
0480850	Camera License - 50 Pack
0480900	Camera License - 100 Pack

SmartIP Video Transmission

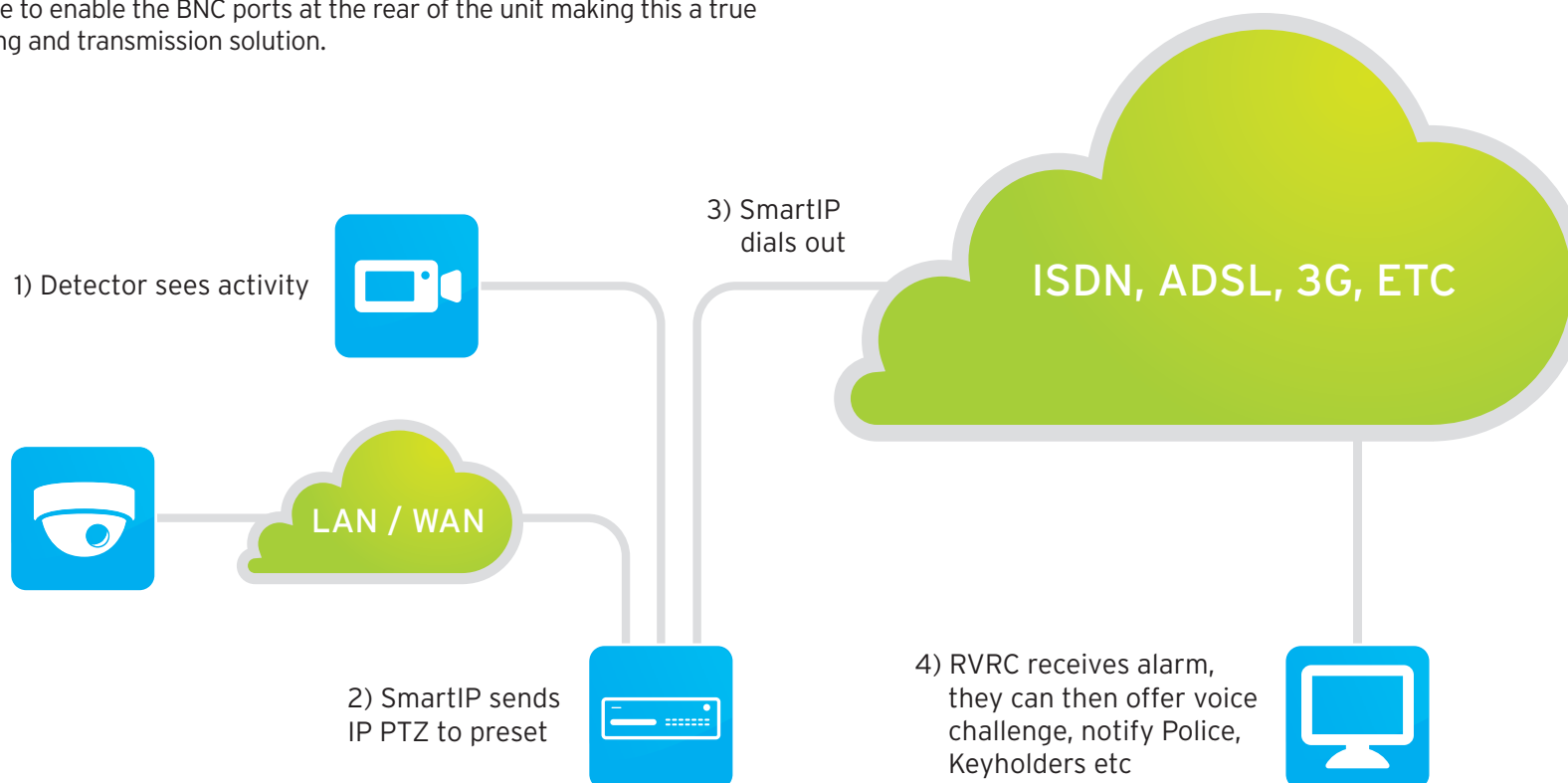
OVERVIEW

A highly efficient real-time IP camera recording and alarm transmission solution, SmartIP provides the ideal solution for all remote monitoring applications. With functionality based on the popular SmartDisc, the SmartIP caters for the connection of standard or megapixel IP cameras, providing EoL monitored alarm inputs and a 16,000 event log for BS8418:2010 compliance.

SmartIP is compatible with a wide range of IP camera manufacturers and provides an excellent starting platform for users to move into IP for remote transmission. For sites where analogue cameras are also required there is a plug in card available to enable the BNC ports at the rear of the unit making this a true Hybrid recording and transmission solution.

SPECIFICATION

- Efficient compression designed for video transmission over low bandwidths
- BS848:2010 compliant
- Up to 10 IP cameras
- Support for multiple camera manufacturers
- Up to 4TB on-board storage
- Integrated audio
- PTZ Camera support
- Basic and advanced levels of management software available



SmartIP Software

SOFTWARE SUITES

Designed to meet the most demanding of requirements, there are 3 levels of software available:

SmartControl LITE: free of charge, stand alone software for a single site connection - for engineers and end users

SmartControl PRO: stand alone software, with multi-site connectivity (up to 21) - for start up monitoring centres

EMS: server based Event Management System software with multi-site connectivity (up to 50) and site map module - for monitoring centres wanting to offer BS8418

Videowall: supports up to 64 video streams on up to 4 monitors

S_Remote: iOS app for remote viewing of sites, with live view, playback, PTZ control, relay operation and arm/disarm



SmartIP Software Type	LITE	PRO	EMS
System architecture	Single PC	Single PC	Server / Client
Simultaneous connections	1	21	50
Max number of transmitters	6000	6000	Unlimited
Transmitter multi view modes	1, 4, 10ch	1, 4, 10ch	1, 4, 10ch
Remote configuration of transmitters	Yes	Yes	Yes
PTZ control	Yes	Yes	Yes
Relay control	Yes	Yes	Yes
Logfile operator comments	No	Yes	Yes
Transmitter specific information text	No	Yes	Yes
Scheduled arm/disarm	No	No	Yes
Site maps	No	No	Yes
HT Heath check	No	No	Yes
Automated firmware update tool	No	No	Yes



Notes

[illegible]



Flexibility by Design™

www.vista-cctv.com

T: +44 (0) 118 912 5000

E: info@vista-cctv.com

Specifications are subject to change without notice.

The information in this brochure has been checked for accuracy.

No liability will be accepted by Norbain for any errors or omissions in this information.

Version 1.2

